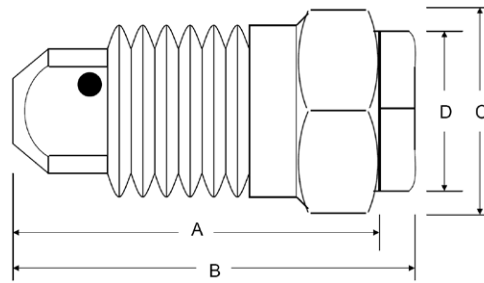


## TYPE SH (Steinen/Hahn)

Steinen Spraylet™ hollow cone nozzles are non-clogging because they do not contain any cores or internal vanes. All of these nozzles are of two piece design with removable caps for easy cleaning. They are offered in a variety of flow rates from 0.20 gallons per minute (GPM) up to 2.0 GPM (.75 liters/minute to 7.6 LPM), and in a variety of spray angles from 25° to 95°. The Spraylet™ body style allows for spray to exit the nozzle parallel to the pipe thread for a 'direct on' hollow cone spray.



### DIMENSIONS & WEIGHTS

Nozzle Type	Material	Inlet Conn. (in.)	A (in.)	B (in.)	C (in.)	D (in.)	Weight Approx.(oz.)
<b>All SH nozzles</b>	<b>Brass</b>	<b>3/8"</b>	<b>1 3/32"</b>	<b>1 7/32"</b>	<b>11/16"</b>	<b>1/2"</b>	<b>1</b>

Steinen/Hahn	Spraying Sys	Joy Mining	BODY/TIP ORIFICE		RATED CAPACITY (gallons/minute)				SPRAY ANGLE	
			Decimal	Fraction	10 PSI	20 PSI	40 PSI	100 PSI	20 PSI	80 PSI
Nozzle Type / Part Number										
SH 2	BD 2		.078/.078	5/64 - 5/64	0.20	0.28	0.40	0.63	60°	70°
SH 3-1	BD 3-1	01566237-0007	.094/.063	3/32 - 1/16	-	0.18	0.26	0.40	49°	65°
SH 3-2	BD 3-2	01566237-0051	.094/.078	3/32 - 5/64	0.22	0.31	0.44	0.69	57°	74°
SH 3	BD 3	01566237-0006	.094/.094	3/32 - 3/32	0.30	0.42	0.60	0.95	64°	77°
SH 3-5	BD 3-5		.094/.125	3/32 - 1/8	0.34	0.48	0.68	1.1	80°	95°
SH 3-8	BD 3-8	01566237-0012	.094/.156	3/32 - 5/32	0.41	0.58	0.82	1.3	80°	95°
SH 5-2	BD 5-2		.109/.078	7/64 - 5/64	-	0.38	0.54	0.85	50°	65°
SH 5-3	BD 5-3		.109/.094	7/64 - 3/32	-	0.52	0.74	1.2	59°	75°
SH 5	BD 5	01566237-0047	.109/.125	7/64 - 1/8	0.50	0.71	1.0	1.6	67°	76°
SH 8	BD 8		.156/.156	5/32 - 5/32	0.80	1.1	1.6	2.5	65°	70°
SH 10	BD 10		.156/.172	5/32 - 11/64	1.0	1.4	2.0	3.2	65°	72°
SH 20-1	n/a		.156/.063	5/32 - 1/16	0.24	0.33	0.47	0.74	15°	25°
SH 20-2	n/a		.156/.078	5/32 - 5/54	0.38	0.54	0.75	1.20	25°	45°
SH 20-3	n/a		.156/.094	5/32 - 3/32	0.62	0.88	1.24	2.00	35°	45°

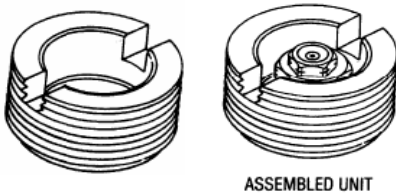
The Type SH Spraylet™ nozzle is manufactured by HAHN Industries, a Division of Steinen. These nozzles are direct replacements for equivalent Spraying Systems type BD WhirlJet® nozzles.

WhirlJet® is a registered trademark of the Spraying Systems Co.

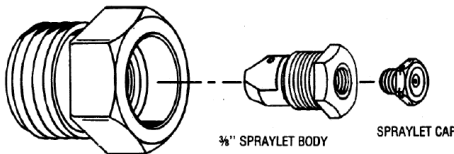


## SPRAYLET™ *HOLLOW CONE* NOZZLES ADAPTERS

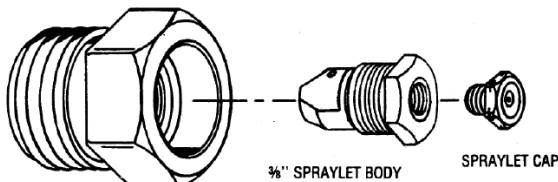
The Type SH Spraylet nozzle is manufactured by HAHN Industries, a Division of Steinen. Adapters for use with this nozzle converts the nozzles from a 3/8" male thread to either 3/4", 1-1/16" or 1-1/4" outside thread.



Above - Spraylet adapter (363-00000) with a 1 1/4" outside thread.



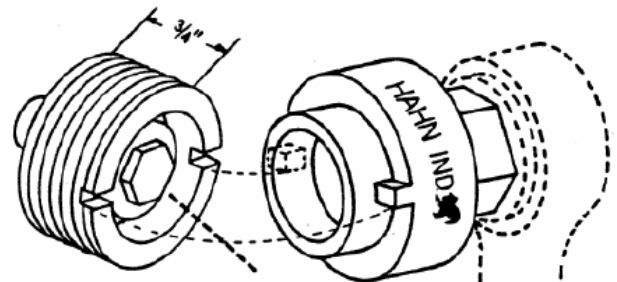
Above - Spraylet adapter (367-00000) with a 3/4" outside thread.



Above - Spraylet adapter (368-00000) with a 1 1/16" outside thread.



Above – Shows a Type SH 3-2 Spraylet nozzle as it is being screwed into an adapter with a 1 1/4" outside thread (Part # 363-00000).



### 1 1/4" ADAPTER HEAD TOOL

Adapter Head Tool (Part # 501-00001)  
for installing adapter Part # 363-00000.

Adapter Part Numbers:	DIMENSIONS		
	Material	Spraylet Nozzle Conn. (in.)	Adapter Thread Conn. (in.)
Part # 363-00000	Brass	3/8"	1 - 1/4"
Part # 367-00000	Brass	3/8"	3/4"
Part # 368-00000	Brass	3/8"	1 - 1/16"

**HAHN**

QUALITY SERVICE

