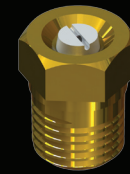




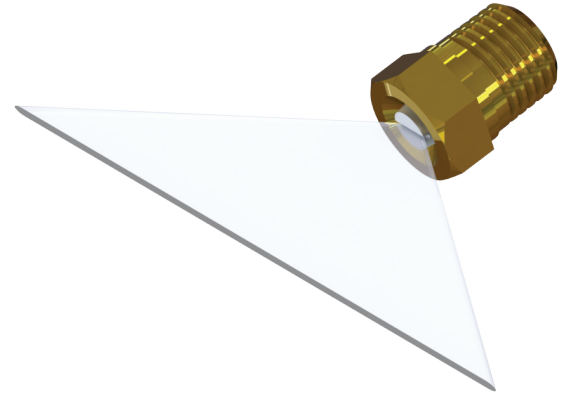
# Fan Jet<sup>®</sup> Flat Spray (high pressure flat spray)



Type **VHP**

Steinen Mfg. Co. 29 East Halsey Road, Parsippany, NJ 07054 973.887.6400 F: 973.887.4632 info@steinen.com www.steinen.com

Steinen has developed the VHP nozzle specifically for high-pressure spray cleaning and washing processes. Flat, evenly distributed fan pattern provides maximum impact through the complete pattern.



## Type VHP

### Spray Characteristics

Flat, even low-capacity, high-pressure spray. Available with spray angles of 0°, 15°, 25°, 50°, 65°, 80°, and 90°

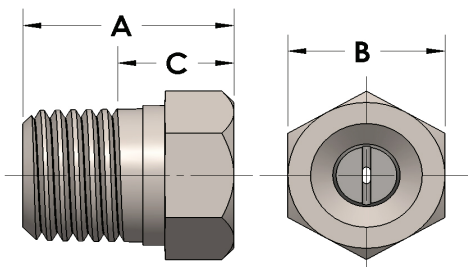
### Construction

Two-piece design, brass body with permanently locked-in stainless or hardened orifice insert. Available in 1/8 or 1/2 inch male pipe connection.

### Materials

Brass body with permanently locked-in stainless or hardened orifice insert.

Nozzle Identifier	Pipe Size Availability ✓ indicates available		Approx. Orifice Diameter	CAPACITY IN GALLONS PER MINUTE (At Various Pressures in Pounds Per Square Inch)											
	1/8	1/4		20 psi	40 psi	100 psi	200 psi	300 psi	400 psi	500 psi	600 psi	700 psi	800 psi	900 psi	1000 psi
	0.20	✓		✓	0.036	0.14	0.20	0.31	0.44	0.53	0.60	0.67	0.74	0.79	0.84
0.30	✓	✓	0.043	0.21	0.30	0.47	0.65	0.79	0.91	1.0	1.1	1.1	1.2	1.3	1.4
0.40	✓	✓	0.052	0.28	0.40	0.62	0.87	1.0	1.2	1.3	1.4	1.5	1.6	1.7	1.8
0.45	✓	✓	0.055	0.32	0.45	0.70	0.97	1.1	1.3	1.5	1.6	1.7	1.8	2.0	2.1
0.50	✓	✓	0.058	0.35	0.50	0.77	1.0	1.3	1.5	1.6	1.8	1.9	2.1	2.2	2.3
0.55	✓	✓	0.060	0.39	0.55	0.85	1.1	1.4	1.6	1.8	2.0	2.1	2.3	2.4	2.5
0.60	✓	✓	0.062	0.42	0.60	0.93	1.3	1.5	1.8	2.0	2.2	2.3	2.5	2.6	2.8
0.65	✓	✓	0.064	0.46	0.65	1.0	1.4	1.7	1.9	2.1	2.3	2.5	2.7	2.9	3.0
0.70	✓	✓	0.067	0.49	0.70	1.0	1.5	1.8	2.1	2.3	2.5	2.7	2.9	3.1	3.3
0.80	✓	✓	0.072	0.56	0.80	1.2	1.7	2.1	2.4	2.7	2.9	3.1	3.3	3.5	3.7
0.90	✓	✓	0.076	0.64	0.90	1.4	1.9	2.3	2.7	3.0	3.3	3.5	3.7	4.0	4.2
1.00	✓	✓	0.078	0.70	1.0	1.5	2.1	2.6	3.0	3.3	3.7	3.9	4.2	4.4	4.7



Type	Pipe Size	Net Weight Oz.	A	B	C
VHP	1/8 NPT	0.63	0.625	0.500	0.325
	1/4 NPT	0.67	0.750	0.563	0.400