



# Tan-Jet® Hollow Cone Wide-Angle

Type TWF  
Type TWM

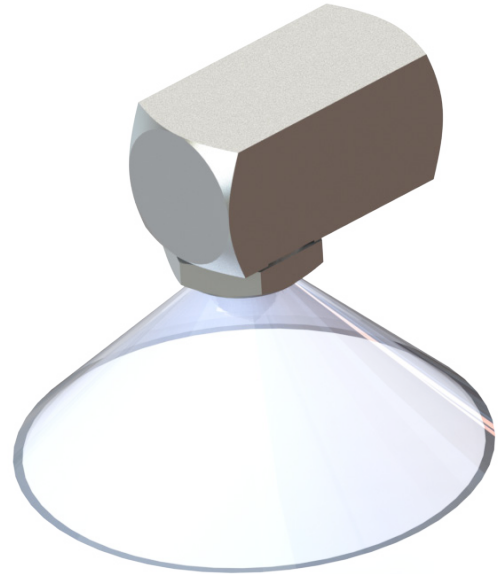
Steinen Mfg. Co. 29 East Halsey Road, Parsippany, NJ 07054 973.887.6400 F: 973.887.4632 info@steinen.com www.steinen.com

Steinen had designed a superior truly wide-angle, hollow cone spray nozzle, the Tan-Jet®. The advantage of this nozzle is the vortex created as a result of incoming liquid introduced at 90°. As the liquid leaves the nozzle, the liquid is uniformly atomized and a very wide and distance hollow cone pattern is achieved.

Two types of Tan-Jet® hollow cone, wide angle nozzles are available:

- Type TWF - NPT female threads
- Type TWM - NPT male threads

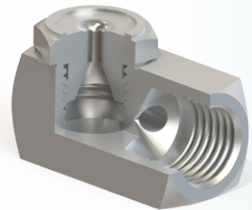
Numerous flow rates are available from 0.10 gallons per minute (GPM) up to 31 GPM at pressures, typically in the range of 5 PSI to 10 PSI, in various types of steel, stainless steel and brass.



## Spray Characteristics

## Construction

## Materials

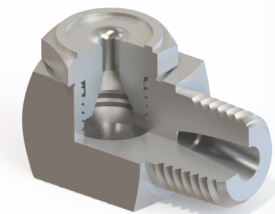


**Type TWF (Female)**

Uniform hollow cone, wide-angle spray pattern with fine atomization at all pressures. Nozzles typically spray between 105 and 120 degree spray angles. See chart on reverse side for expected angles a certain flow rates and pressures.

These nozzles are non-clogging as they do not contain any cores or internal vanes. Nozzles are two-piece design with removable caps. Nozzles are available in 1/8", 1/4", 3/8", 1/2" and 3/4" NPT female connections..

Stainless steel spray nozzles (330 stainless as well as 316 stainless), brass, steel and other materials upon request.



**Type TWM (Male)**

Uniform hollow cone, wide-angle spray pattern with fine atomization at all pressures. Nozzles typically spray between 105 and 120 degree spray angles. See chart on reverse side for expected angles a certain flow rates and pressures.

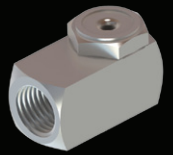
These nozzles are non-clogging as they do not contain any cores or internal vanes. Nozzles are two-piece design with removable caps. Nozzles are available in 1/8", 1/4", 3/8", 1/2" and 3/4" NPT male connections.

Stainless steel spray nozzles (330 stainless as well as 316 stainless), brass, steel and other materials upon request.



# Tan-Jet® Hollow Cone Wide-Angle

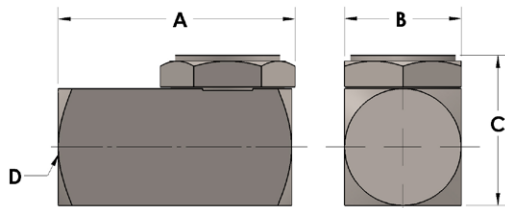
Type **TW**  
(Female & Male)



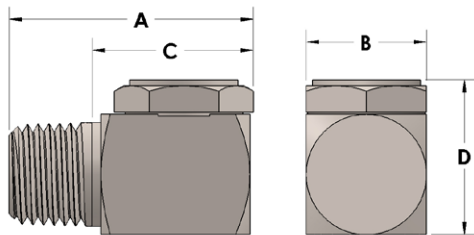
Steinen Mfg. Co. 29 East Halsey Road, Parsippany, NJ 07054 973.887.6400 F: 973.887.4632 info@steinen.com www.steinen.com

Nozzle Identifier	Pipe Size Availability ✓ indicates available					Approx. Orifice Diameter*	Capacity in Gallons per Minute (At Various Pressures in Pounds Per Square Inch)						SPRAY ANGLES
	1/8	1/4	3/8	1/2	3/8		5 psi	10 psi	20 psi	40 psi	80 psi	100 psi	
0.20	✓					0.062	—	0.10	0.14	0.2	0.28	0.31	115°
0.40		✓				0.086	—	0.20	0.28	0.4	0.56	0.63	115°
0.60		✓				0.096	—	0.30	0.42	0.6	0.85	0.95	115°
1.0		✓				0.120	—	0.50	0.70	1.0	1.4	1.6	115°
1.5		✓				0.140	0.55	0.75	1.1	1.5	2.1	2.4	115°
2.0		✓				0.187	0.71	1.0	1.4	2.0	2.8	3.2	115°
2.5		✓				0.187	0.91	1.2	1.8	2.5	3.5	3.9	115°
3.0		✓				0.205	1.1	1.5	2.1	3.0	4.2	4.7	115°
4.0			✓			0.250	1.4	2.0	2.8	4.0	5.6	6.3	100°
5.0			✓			0.272	1.8	2.4	3.5	5.0	7.1	7.9	97°
8.0				✓		0.312	2.8	4.0	5.7	8.0	11.3	12.6	105°
10.0				✓		0.343	3.5	4.9	7.1	10.0	14.2	15.8	105°
12.0					✓	0.375	4.3	6.0	8.5	12.0	17.0	19.0	105°
14.0					✓	0.437	5.0	7.0	9.9	14.0	19.8	22.1	105°
16.0					✓	0.453	5.7	8.0	11.3	16.0	22.6	25.3	105°
20.0					✓	0.500	7.1	10.0	14.1	20.0	28.2	31.6	105°

**TWF**  
(Female)



**TWM**  
(Male)



Type	Pipe Size	Net Weight Oz.	A	B	C	D
TWF	1/8 NPT	0.75	0.875	0.563	---	0.625
	1/4 NPT	1.50	1.125	0.625	---	0.813
	3/8 NPT	2.75	1.344	0.750	---	1.000
	1/2 NPT	5.25	1.625	1.000	---	1.218
	3/4 NPT	11.00	2.063	1.250	---	1.594
TWM	1/8 NPT	1.00	0.938	0.563	.610	0.625
	1/4 NPT	1.75	1.250	0.625	0.820	0.813
	3/8 NPT	3.00	1.438	0.750	1.000	1.000
	1/2 NPT	5.50	1.813	0.875	1.245	1.218
	3/4 NPT	11.75	2.125	1.250	2.560	1.594