



Tan Jet® Solid Cone Spray

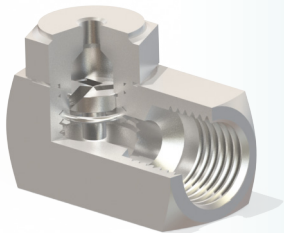
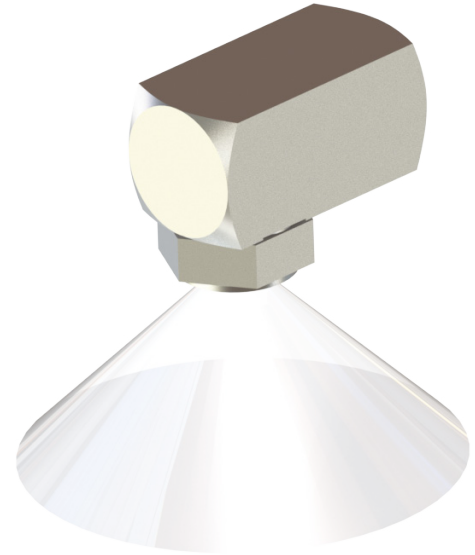
Type **TSF**
Type **TSM**

Steinen Mfg. Co. 29 East Halsey Road, Parsippany, NJ 07054 973.887.6400 F: 973.887.4632 info@steinen.com www.steinen.com

Steinen offers several types of full-cone spray nozzles to satisfy almost any requirement. Nozzles are offered in five different body styles, numerous flow rates from 0.12 gallons per minute (GPM) up to 50 GPM, at pressures from 3 PSI to 150 PSI, in various types of steel, stainless steel, brass and CPVC.

Two types of nozzle construction are available:

- **Type TSF** - four-piece removable tip nozzle
- **Type TSM** - four-piece removable tip nozzle



Type TSF

Spray Characteristics

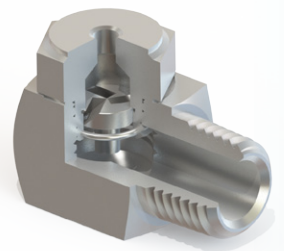
Tan-Jet® solid cone type spray with uniform distribution and atomization throughout the entire spray pattern. Atomization finest at higher pressures.

Construction

Three-piece design with removable nozzle tip and internal vane. Nozzles available in 1/4", 3/8" & 1/2" female NPT pipe thread.

Materials

These nozzles are available in 303 & 316 Stainless Steel, steel and brass.



Type TSM

Tan-Jet® solid cone type spray with uniform distribution and atomization throughout the entire spray pattern. Atomization finest at higher pressures.

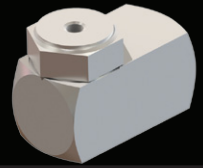
Three-piece design with removable nozzle tip and internal vane. Nozzles available in 1/4", 3/8" & 1/2" male NPT pipe thread.

These nozzles are available in 303 & 316 Stainless Steel, steel and brass.



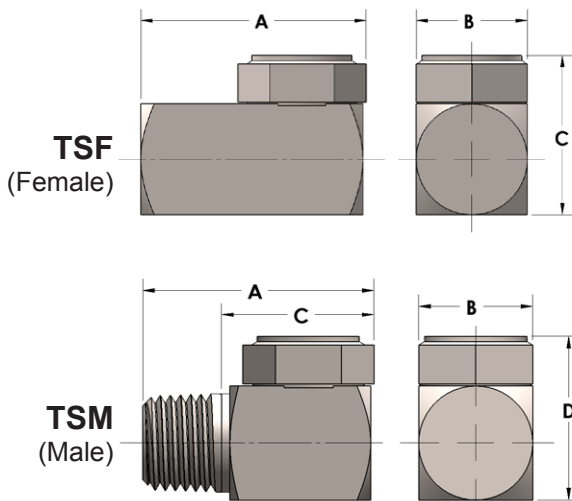
Tan Jet[®] Solid Cone Spray

Type **TS**
(Female shown)



Steinen Mfg. Co. 29 East Halsey Road, Parsippany, NJ 07054 973.887.6400 F: 973.887.4632 info@steinen.com www.steinen.com

Nozzle Identifier	Pipe Size Availability ✓ indicates available			Approx. Orifice Diameter*	Capacity in Gallons per Minute (At Various Pressures in Pounds Per Square Inch)						SPRAY ANGLES (At Various PSI)
	1/4	3/8	1/2		5 psi	20 psi	40 psi	80 psi	100 psi	125 psi	40 psi
0.50	✓			0.045	—	0.36	0.50	0.70	0.80	0.85	45°
0.60	✓			0.045	0.21	0.42	0.60	0.85	0.95	1.0	55°
0.80	✓			0.045	0.28	0.57	0.80	1.1	1.3	1.4	65°
1.0	✓			0.045	0.35	0.70	1.0	1.4	1.6	1.7	80°
1.5	✓			0.051	0.53	1.1	1.5	2.1	2.4	2.7	75°
2.0	✓			0.051	0.71	1.4	2.0	2.8	3.2	3.5	80°
2.5		✓		0.064	0.91	1.8	2.5	3.5	3.9	4.4	65°
3.0		✓		0.064	1.1	2.1	3.0	4.2	4.7	5.2	70°
3.5		✓		0.064	1.3	2.4	3.5	4.9	5.6	6.2	80°
4.0		✓		0.064	1.4	2.8	4.0	5.6	6.3	7.2	85°
4.5		✓		0.075	1.6	3.2	4.5	6.3	7.1	7.9	85°
5.0		✓		0.075	1.8	3.5	5.0	7.1	7.9	8.8	85°
5.0			✓	0.091	1.8	3.5	5.0	7.1	7.9	8.8	75°
6.0			✓	0.091	2.1	4.2	6.0	8.5	9.5	10.5	80°
7.0			✓	0.091	2.5	4.9	7.0	9.9	11.1	12.4	80°
8.0			✓	0.102	2.8	5.7	8.0	11.3	12.6	14.2	80°
9.0			✓	0.102	3.2	6.3	9.0	12.6	14.1	15.8	80°
10.0			✓	0.102	3.5	7.1	10.0	14.2	15.8	17.6	85°



	Pipe Size	Net Weight Oz.	A	B	C	D
Female	1/4 NPT	1.50	1.125	0.625	---	0.906
	3/8 NPT	2.75	1.344	0.750	---	1.250
	1/2 NPT	5.25	1.625	1.000	---	1.468
Male	1/4 NPT	1.75	1.250	0.625	0.820	0.906
	3/8 NPT	3.00	1.438	0.750	1.000	1.250
	1/2 NPT	5.50	1.813	0.875	1.245	1.406