



Tan-Jet[®] Hollow Cone

Type **TF**
Type **TM**

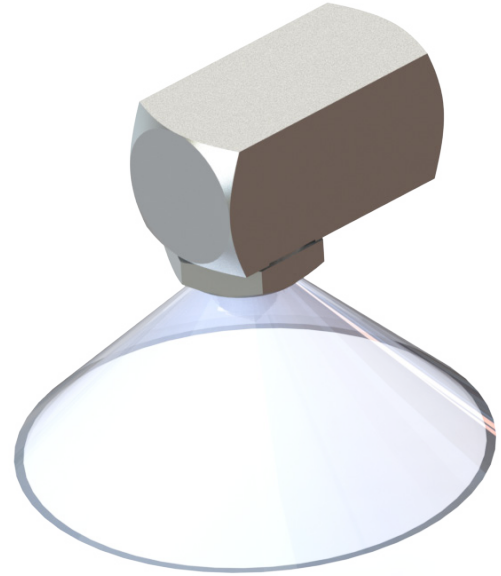
Steinen Mfg. Co. 29 East Halsey Road, Parsippany, NJ 07054 973.887.6400 F: 973.887.4632 info@steinen.com www.steinen.com

Steinen has designed two different hollow cone spray nozzles, the Tan-Jet[®]. The advantage of the Tan-Jet[®] nozzle is the vortex created as a result of incoming liquid introduced at 90°. As the liquid leaves the nozzle, the liquid is uniformly atomized and a distinct hollow cone pattern is achieved.

Two types of Tan-Jet[®] hollow cone, wide angle nozzles are available:

- Type **TF** - NPT female threads
- Type **TM** - NPT male threads

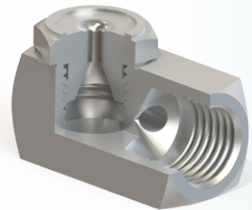
Numerous flow rates are available from 0.08 gallons per minute (GPM) up to 42 GPM, at pressures from 3 PSI to 125 PSI, in various types of steel, stainless steel and brass.



Spray Characteristics

Construction

Materials

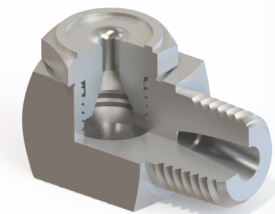


**Type
TF
(Female)**

Uniform hollow cone spray pattern with fine atomization at all pressures. Nozzles typically spray between 70 and 90 degree spray angles.

These nozzles are non-clogging as they do not contain any cores or internal vanes. Nozzles are two-piece design with removable caps. Nozzles are available in 1/8", 1/4", 3/8", 1/2" and 3/4" NPT female connections.

Stainless steel spray nozzles (330 stainless as well as 316 stainless), brass, steel and other materials upon request.



**Type
TM
(Male)**

Uniform hollow cone spray pattern with fine atomization at all pressures. Nozzles typically spray between 70 and 90 degree spray angles.

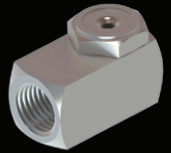
These nozzles are non-clogging as they do not contain any cores or internal vanes. Nozzles are two-piece design with removable caps. Nozzles are available in 1/8", 1/4", 3/8", 1/2" and 3/4" NPT male connections.

Stainless steel spray nozzles (330 stainless as well as 316 stainless), brass, steel and other materials upon request.



Tan-Jet® Hollow Cone

Type **TF**
(Female & Male)

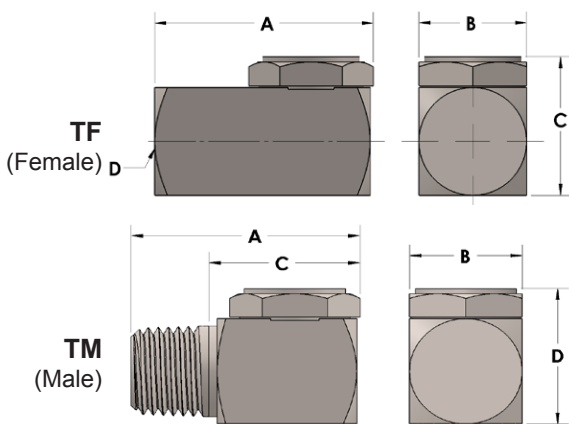


Steinen Mfg. Co. 29 East Halsey Road, Parsippany, NJ 07054 973.887.6400 F: 973.887.4632 info@steinen.com www.steinen.com

Available in 70 and 90 degree spray angles.

Nozzle Identifier	Pipe Size Availability ✓ indicates available					Approx. Orifice Diameter	Capacity in Gallons per Minute (At Various Pressures in Pounds Per Square Inch)						
	1/8	1/4	3/8	1/2	3/4		3	10	20	40	80	100	125
0.20	✓					0.059	—	0.10	0.14	0.20	0.28	0.31	0.34
0.40	✓					0.082	—	0.20	0.28	0.40	0.56	0.63	0.67
0.60	✓					0.093	—	0.30	0.42	0.60	0.85	0.95	1.0
0.80	✓					0.120	0.22	0.40	0.57	0.80	1.1	1.3	1.4
1.0	✓					0.125	0.27	0.50	0.70	1.0	1.4	1.6	1.7
1.2	✓					0.140	0.34	0.60	0.84	1.2	1.6	1.8	2.0
1.5	✓					0.156	0.41	0.75	1.1	1.5	2.1	2.4	2.7
2.0	✓					0.171	0.55	1.0	1.4	2.0	2.8	3.2	3.5
2.5	✓					0.203	0.70	1.2	1.8	2.5	3.5	3.9	4.4
0.40		✓				0.078	—	0.20	0.28	0.40	0.56	0.63	0.67
0.60		✓				0.098	—	0.30	0.42	0.60	0.85	0.95	1.0
0.80		✓				0.098	0.22	0.40	0.57	0.80	1.1	1.3	1.4
1.0		✓				0.125	0.27	0.50	0.70	1.0	1.4	1.6	1.7
1.2		✓				0.140	0.34	0.60	0.84	1.2	1.6	1.8	2.0
1.5		✓				0.156	0.41	0.75	1.1	1.5	2.1	2.4	2.7
2.0		✓				0.187	0.55	1.0	1.4	2.0	2.8	3.2	3.5
2.5		✓				0.203	0.70	1.2	1.8	2.5	3.5	3.9	4.4
3.0		✓				0.203	0.82	1.5	2.1	3.0	4.2	4.7	5.2
0.80			✓			0.098	0.22	0.4	0.6	0.8	1.1	1.3	1.4
1.0			✓			0.120	0.27	0.5	0.7	1.0	1.4	1.6	1.7
1.2			✓			0.128	0.34	0.6	0.8	1.2	1.6	1.8	2.0
1.5			✓			0.149	0.41	0.8	1.1	1.5	2.1	2.4	2.7
2.0			✓			0.171	0.55	1.0	1.4	2.0	2.8	3.2	3.5
2.5			✓			0.191	0.70	1.2	1.8	2.5	3.5	3.9	4.4
3.0			✓			0.218	0.82	1.5	2.1	3.0	4.2	4.7	5.2
3.5			✓			0.221	1.0	1.7	2.4	3.5	4.9	5.6	6.2

Nozzle Identifier	Pipe Size Availability ✓ indicates available					Approx. Orifice Diameter	Capacity in Gallons per Minute (At Various Pressures in Pounds Per Square Inch)						
	1/8	1/4	3/8	1/2	3/4		3	10	20	40	80	100	125
4.0			✓			0.228	1.1	2.0	2.8	4.0	5.6	6.3	7.2
4.5			✓			0.250	1.2	2.2	3.2	4.5	6.3	7.1	7.9
5.0			✓			0.250	1.4	2.4	3.5	5.0	7.1	7.9	8.8
4.0				✓		0.234	1.1	2.0	2.8	4.0	5.6	6.3	7.2
4.5				✓		0.234	1.2	2.2	3.2	4.5	6.3	7.1	7.9
5.0				✓		0.256	1.4	2.4	3.5	5.0	7.1	7.9	8.8
6.0				✓		0.265	1.6	3.0	4.2	6.0	8.5	9.5	10.5
7.0				✓		0.287	1.9	3.5	4.9	7.0	9.9	11.1	12.4
8.0				✓		0.296	2.2	4.0	5.7	8.0	11.3	12.6	14.2
9.0				✓		0.312	2.4	4.5	6.3	9.0	12.6	14.1	15.8
10.0				✓		0.339	2.7	4.9	7.1	10.0	14.2	15.8	17.6
12.0				✓		0.375	3.3	6.0	8.5	12.0	17.0	19.0	21.0
7.0					✓	0.312	1.9	3.5	4.5	7.0	9.9	11.1	12.4
8.0					✓	0.328	2.2	4.0	5.7	8.0	11.3	12.6	14.2
9.0					✓	0.348	2.4	4.5	6.3	9.0	12.6	14.1	15.8
10.0					✓	0.375	2.7	4.9	7.1	10.0	14.2	15.8	17.6
12.0					✓	0.404	3.3	6.0	8.5	12.0	17.0	19.0	21.0
13.0					✓	0.421	3.5	6.5	9.1	13.0	18.4	20.6	23.0
14.0					✓	0.437	3.8	7.0	9.9	14.0	19.8	22.1	24.8
16.0					✓	0.453	4.4	8.0	11.3	16.0	22.6	25.3	28.2
18.0					✓	0.468	4.9	9.0	12.7	18.0	25.4	28.4	31.8
19.0					✓	0.484	5.1	9.6	13.4	19.0	26.8	30.0	33.0
20.0					✓	0.500	5.5	10.0	14.1	20.0	28.2	31.6	35.2
21.0					✓	0.500	5.7	10.5	14.8	21.0	29.6	33.1	36.6
22.0					✓	0.515	6.0	11.0	15.5	22.0	31.1	34.7	38.6
24.0					✓	0.546	6.6	12.0	17.0	24.0	34.0	38.0	42.3



Type	Pipe Size	Net Weight Oz.	A	B	C	D
TF	1/8 NPT	0.75	0.875	0.563	---	0.625
	1/4 NPT	1.50	1.125	0.625	---	0.813
	3/8 NPT	2.75	1.344	0.750	---	1.000
	1/2 NPT	5.25	1.625	1.000	---	1.218
	3/4 NPT	11.00	2.063	1.250	---	1.594
TM	1/8 NPT	1.00	0.938	0.563	.610	0.625
	1/4 NPT	1.75	1.250	0.625	0.820	0.813
	3/8 NPT	3.00	1.438	0.750	1.000	1.000
	1/2 NPT	5.50	1.813	0.875	1.245	1.218
	3/4 NPT	11.75	2.125	1.250	2.560	1.594