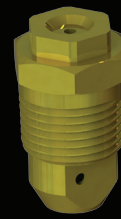




Spraylet™ Hollow Cone



Type **SH**

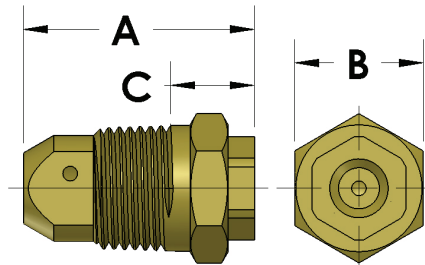
Steinen Mfg. Co. 29 East Halsey Road, Parsippany, NJ 07054 973.887.6400 F: 973.887.4632 info@steinen.com www.steinen.com

Steinen Spraylet™ hollow cone nozzles are non-clogging because they do not contain any cores or internal vanes. All of these nozzles are of two piece design with removable caps for easy cleaning. They are offered in a variety of flow rates from 0.20 gallons per minute (GPM) up to 2.0 GPM (.75 liters/minute to 7.6 LPM), and in a variety of spray angles from 25° to 95°. The Spraylet™ body style allows for spray to exit the nozzle parallel to the pipe thread for a 'direct on' hollow cone spray.



Spraylets are constructed in various materials including 303 & 316 stainless steel and brass, and are available in 3/8 inch male pipe thread (other thread sizes and types available upon request).

| Nozzles presented from low flow to high flow | | | | | | | | Nozzles presented from narrow angle to wide angle | | | | | | | |
|--|--------------------|--------------------------------|--------|--------|---------|--------------|--------|---|--------------------|--------------------------------|--------|--------|---------|--------------|--------|
| Nozzle Ident | Free Passage Size* | Capacity in Gallons per Minute | | | | Spray Angles | | Nozzle Ident | Free Passage Size* | Capacity in Gallons per Minute | | | | Spray Angles | |
| | | 10 psi | 20 psi | 40 psi | 100 psi | 20 psi | 80 psi | | | 10 psi | 20 psi | 40 psi | 100 psi | 20 psi | 80 psi |
| SH 3-1 | 0.063 | 0.13 | 0.18 | 0.26 | 0.40 | 49° | 65° | SH 20-1 | 0.063 | 0.24 | 0.33 | 0.47 | 0.74 | 15° | 25° |
| SH 2 | 0.078 | 0.20 | 0.28 | 0.40 | 0.63 | 60° | 70° | SH 20-2 | 0.078 | 0.38 | 0.54 | 0.75 | 1.2 | 25° | 45° |
| SH 3-2 | 0.078 | 0.22 | 0.31 | 0.44 | 0.69 | 57° | 74° | SH 20-3 | 0.094 | 0.62 | 0.88 | 1.2 | 2.0 | 35° | 45° |
| SH 20-1 | 0.063 | 0.24 | 0.33 | 0.47 | 0.74 | 15° | 25° | SH 3-1 | 0.063 | 0.13 | 0.18 | 0.26 | 0.40 | 49° | 65° |
| SH 5-2 | 0.078 | 0.27 | 0.38 | 0.54 | 0.85 | 50° | 65° | SH 5-2 | 0.078 | 0.27 | 0.38 | 0.54 | 0.85 | 50° | 65° |
| SH 3 | 0.094 | 0.30 | 0.42 | 0.60 | 0.95 | 64° | 77° | SH 3-2 | 0.078 | 0.22 | 0.31 | 0.44 | 0.69 | 57° | 74° |
| SH 3-5 | 0.094 | 0.34 | 0.48 | 0.68 | 1.1 | 80° | 95° | SH 5-3 | 0.094 | 0.37 | 0.52 | 0.74 | 1.2 | 59° | 75° |
| SH 5-3 | 0.094 | 0.37 | 0.52 | 0.74 | 1.2 | 59° | 75° | SH 2 | 0.078 | 0.20 | 0.28 | 0.40 | 0.63 | 60° | 70° |
| SH 20-2 | 0.078 | 0.38 | 0.54 | 0.75 | 1.2 | 25° | 45° | SH 3 | 0.094 | 0.30 | 0.42 | 0.60 | 0.95 | 64° | 77° |
| SH 3-8 | 0.094 | 0.41 | 0.58 | 0.82 | 1.3 | 80° | 95° | SH 8 | 0.156 | 0.80 | 1.1 | 1.6 | 2.5 | 65° | 70° |
| SH 5 | 0.109 | 0.50 | 0.71 | 1.0 | 1.6 | 67° | 76° | SH 10 | 0.156 | 1.0 | 1.4 | 2.0 | 3.2 | 65° | 72° |
| SH 20-3 | 0.094 | 0.62 | 0.88 | 1.2 | 2.0 | 35° | 45° | SH 5 | 0.109 | 0.50 | 0.71 | 1.0 | 1.6 | 67° | 76° |
| SH 8 | 0.156 | 0.80 | 1.1 | 1.6 | 2.5 | 65° | 70° | SH 3-5 | 0.094 | 0.34 | 0.48 | 0.68 | 1.1 | 80° | 95° |
| SH 10 | 0.156 | 1.0 | 1.4 | 2.0 | 3.2 | 65° | 72° | SH 3-8 | 0.094 | 0.41 | 0.58 | 0.82 | 1.3 | 80° | 95° |



| Nozzle Type | Pipe Size | Weight Oz. | A | B | C |
|-------------|-----------|------------|-------|-------|-------|
| SH | 3/8 NPT | 1.00 | 1.218 | 0.688 | 0.420 |