



# Fan-Jet® Flat Spray Nozzles

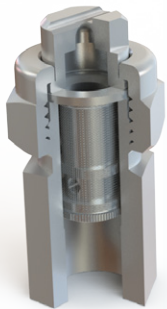
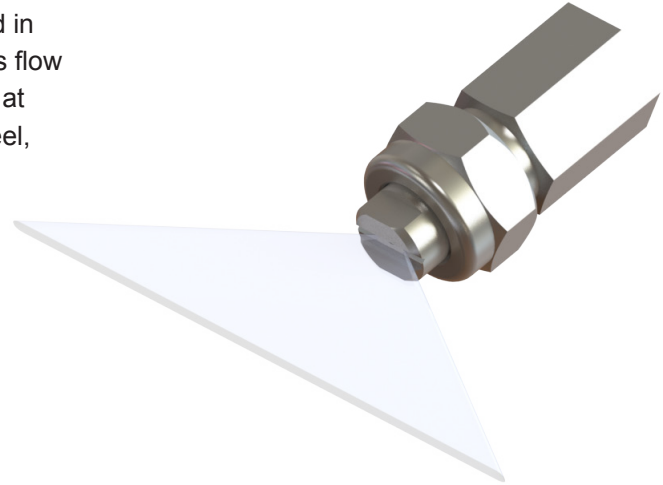
Type **FAF**  
Type **FAM**  
(female or male)

Steinen Mfg. Co. 29 East Halsey Road, Parsippany, NJ 07054 973.887.6400 F: 973.887.4632 info@steinen.com www.steinen.com

Steinen offers a wide variety of flat spray nozzles to satisfy almost any requirement. Nozzles are offered in 10 different spray angles from 0° to 110°, numerous flow rates from 0.20 gallons per minute (GPM) up to 50 GPM, at pressures from 5 PSI to 1,000 PSI, in various types of steel, stainless steel, brass and CPVC.

Two types of nozzle construction are available:

- **Type FAF** - four-piece removable tip nozzle available with female thread
- **Type FAM** - four-piece removable tip nozzle available with male thread



**Type FAF**  
(Female)

### Spray Characteristics

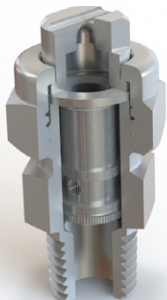
Spray Characteristics - Flat, high impact, sharply defined spray pattern without heavy edges. This type of high velocity spray is excellent for cleaning applications. Spray angles of 0, 15, 25, 40, 50, 65, 80, 95 and 110 degrees are available.

### Construction

Nozzle is four parts: cap, orifice tip, strainer with 100 mesh screen, and the adapter. No cores or internal vanes to clog. Orifice tip adjustable directionally without disturbing the pipe connection. Available in 1/8" and 1/4" NPT female thread.

### Materials

These nozzles are available in 303 & brass



**Type FAM**  
(Male)

Spray Characteristics - Flat, high impact, sharply defined spray pattern without heavy edges. This type of high velocity spray is excellent for cleaning applications. Spray angles of 0, 15, 25, 40, 50, 65, 80, 95 and 110 degrees are available.

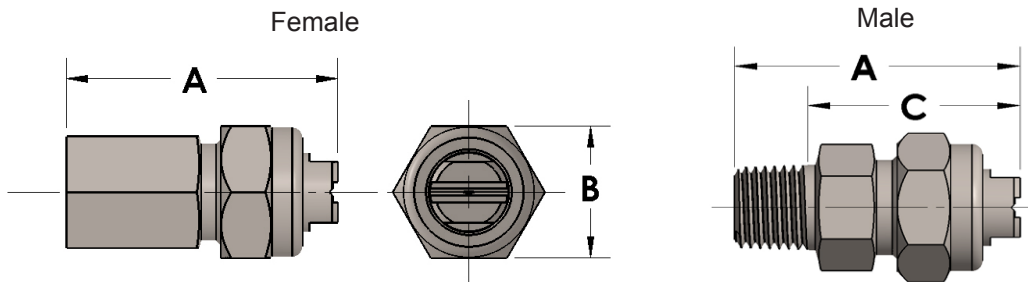
Nozzle is four parts: cap, orifice tip, strainer with 100 mesh screen, and the adapter. No cores or internal vanes to clog. Orifice tip adjustable directionally without disturbing the pipe connection. Available in 1/8" and 1/4" NPT male thread.

These nozzles are available in 303 & brass.



Nozzle Identifier	Pipe Sizes Male & Female ✓ Indicates available		Strainer Mesh	Capacity in Gallons per Minute (at various pressures in pounds per square inch)					
	1/8	1/4		10	20	40	60	100	150
0.20	✓	✓	100	0.10	0.14	0.20	0.25	0.32	0.39
0.25	✓	✓	100	0.13	0.18	0.25	0.31	0.39	0.48
0.30	✓	✓	100	0.15	0.21	0.30	0.37	0.47	0.58
0.35	✓	✓	100	0.18	0.25	0.35	0.43	0.55	0.68
0.40	✓	✓	100	0.20	0.28	0.40	0.49	0.63	0.78
0.50	✓	✓	100	0.25	0.35	0.50	0.61	0.79	0.97
0.60	✓	✓	100	0.30	0.42	0.60	0.73	0.95	1.1
0.80	✓	✓	100	0.40	0.56	0.80	0.98	1.2	1.5
1.0	✓	✓	*	0.50	0.71	1.0	1.2	1.5	1.9
1.5	✓	✓	*	0.75	1.0	1.5	1.8	2.3	2.9
2.0	✓	✓	*	1.0	1.4	2.0	2.4	3.1	3.8

\*Capacities up to 7.0 G.P.M available upon request



Adjustable FAN-JET® Dimensions and Weights					
Type	Pipe Size	Net Weight Oz.	A	B	C
FAF	1/8 NPT	2.00	1.410	0.812	---
FAM	1/8 NPT	1.25	1.500	0.812	1.150
FAF	1/4 NPT	2.00	1.530	0.812	---
FAM	1/4 NPT	1.25	1.625	0.812	1.275

**Types FAF & FAM:** Four-piece design (cap, orifice tip, strainer with 100 mesh screen and pipe adapter), No internal vanes or cores to clog, orifice tip is adjustable directionally through 360° with out disturbing the pipe connection.