



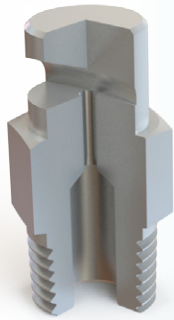
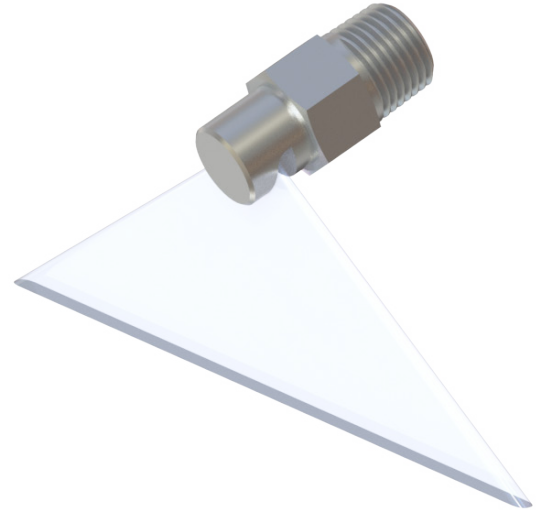
# Flo-Jet® Wide Angle Deflection Nozzles

Type **F**

Steinen Mfg. Co. 29 East Halsey Road, Parsippany, NJ 07054 973.887.6400 F: 973.887.4632 info@steinen.com www.steinen.com

**T**hese wide angle flat spray nozzles achieve up to 160° spray angles based on the flow rate of the nozzle and the operating pressure. See the table on reverse side for the spray angle you can expect at a given flow and pressure.

Numerous flow rates are available from 0.10 gallons per minute (GPM) up to 57 GPM, at pressures from 5 PSI to 60 PSI, in various types of steel, stainless steel, brass and CPVC.



**Type  
F**

### Spray Characteristics

Wide angle deflector type, low impact, flat spray pattern. This type of spray nozzle is useful for coating and cleaning processes. Spray angles, depending on pressure (see table below) can vary from 88 to 165 degrees. Information on capacities and angles not listed are available upon request. Spray exits the nozzle at a 70 degree angle.

### Construction

One-piece design, no cores or internal members to clog. Nozzles have 1/8" 1/4", 3/8", 1/2" and 3/4" male pipe size connections

### Materials

Stainless steel spray nozzles (303 nozzles as well as 316 nozzles), Brass, and other materials available upon request.



70° angle of deflection



Wide Angle



# Flo-Jet® Wide Angle Deflection Nozzles

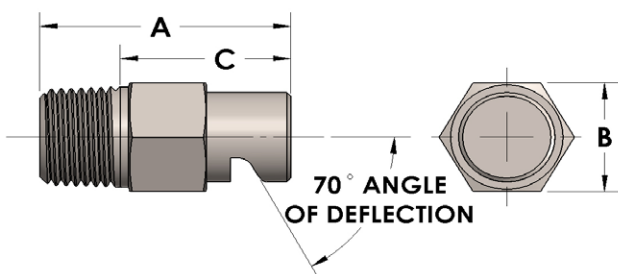
Type **F**



Steinen Mfg. Co. 29 East Halsey Road, Parsippany, NJ 07054 973.887.6400 F: 973.887.4632 info@steinen.com www.steinen.com

Nozzle Identifier	Pipe Size ✓ indicates available					Approx. Orifice Diameter	Capacity in Gallons per Minute (at various pressures in pounds per square inch)					Spray Angle (in Degrees) 40 psi
	1/8	1/4	3/8	1/2	3/4		5 psi	10 psi	20 psi	40 psi	60 psi	
0.20	✓					0.035	-	0.1	0.14	0.20	0.24	125
0.30	✓					0.040	-	0.15	0.21	0.30	0.37	127
0.40	✓					0.046	-	0.20	0.28	0.40	0.49	127
0.50	✓					0.055	-	0.25	0.35	0.50	0.60	130
0.60	✓					0.059	0.21	0.3	0.42	0.60	0.73	135
0.80	✓					0.073	0.28	0.4	0.57	0.80	0.96	145
1.0	✓					0.082	0.35	0.5	0.71	1.0	1.2	140
1.5	✓					0.096	0.53	0.75	1.1	1.5	1.8	155
2.0	✓					0.111	0.71	1	1.4	2.0	2.5	160
2.5	✓					0.125	0.91	1.2	1.8	2.5	3.1	160
3.0	✓					0.136	1.1	1.5	2.1	3.0	3.7	138
3.5	✓					0.144	1.3	1.7	2.4	3.5	4.3	148
4.0	✓					0.154	1.4	2	2.8	4.0	4.9	148
4.0		✓				0.154	1.4	2	2.8	4.0	4.9	145
4.5		✓				0.166	1.6	2.2	3.2	4.5	5.4	145
5.0		✓				0.173	1.8	2.4	3.5	5.0	6.1	145
5.5		✓				0.182	1.9	2.7	3.8	5.5	6.7	145
6.0			✓			0.187	2.1	3	4.2	6.0	7.3	140
7.0			✓			0.201	2.5	3.5	4.9	7.0	8.6	140
8.0			✓			0.218	2.8	4	5.7	8.0	9.8	145
9.0			✓			0.234	3.2	4.5	6.3	9.0	11.0	145
10.0				✓		0.242	3.5	4.9	7.1	10.0	12.3	140
12.0				✓		0.265	4.2	6.0	8.5	12.0	14.7	140
14.0				✓		0.287	5.0	7.0	9.9	14.0	17.1	145
16.0				✓		0.312	5.6	8.0	11.3	16.0	19.6	145
18.0				✓		0.328	6.4	9.0	12.7	18.0	22.0	140
20.0				✓		0.343	7.1	10.0	14.1	20.0	24.5	140
22.0				✓		0.459	7.8	11.0	15.5	22.0	26.9	140
24.0				✓		0.375	8.5	12.0	17.0	24.0	29.4	135
*36.0				✓		0.453	12.6	18.0	25.5	36.0	44.1	150
*48.0				✓		0.515	14.8	21.0	29.6	48.0	57.4	150

\*Available in certain materials only



Type	Pipe Size	Net Weight	A	B	C
F201 to F2501	1/8 NPT	0.50	0.938	0.438	0.594
F3001 to F4001	1/8 NPT	0.75	1.063	0.563	0.719
F4002 to F5502	1/4 NPT	1.00	1.188	0.563	0.719
F6003 to F9003	3/8 NPT	2.00	1.500	0.688	1.000
F10004 to F16004	1/2 NPT	4.00	1.813	0.875	1.188
F18006 to F24006	3/4 NPT	7.00	1.938	1.125	1.125
F36006 to F48006	3/4 NPT	12.00	2.938	1.500	2.125