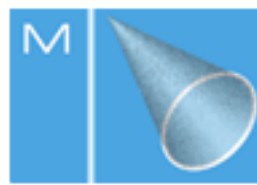


Mist-Jet® Misting / Fogging Nozzles

Home > Industrial Spray Nozzles > Mist-Jet® Misting / Fogging Nozzles



Nozzle Design Features and Benefits

Steinen is the leading designer and manufacturer of misting nozzles in the world. The quality and precision of our misting nozzles cannot be matched by any other nozzle manufacturer.

What sets Steinen apart is our ability to produce nozzles that can create a finely atomized spray with uniform droplet size, consistent spray angles, and at lower pressures than other manufacturer's nozzles. The result is a nozzle that offers the highest performance.

However, don't confuse highest quality and performance with the highest price. Due to our significant production volumes of these misting nozzles, Steinen's production efficiencies mean very competitive prices.

Steinen offers a wide variety of misting nozzles to satisfy almost any requirement. Nozzles are offered in five different configurations, three different spray angles, numerous flow rates from 0.37 gallons per hour (GPH) up to 124 GPH, at pressures from 40 PSI to 500 PSI, in various types of stainless steel.

Four types of nozzles are available:

- the single nozzle tip (**Type A**),
- the nozzle tip (Type A) in a female adapter of various pipe threads (**Type AF**),
- the nozzle tip (Type A) in a male adapter of various pipe threads (**Type AM**),
- the compact sized nozzle tip (**Type P**)

For complete technical specifications, see the tables at the bottom of the page. PDF's also accessible at the bottom of this page.

Type AF & AM

Full Size Nozzles



Spray Characteristics - The very best misting nozzle available! Uniform hollow cone spray pattern with a fine micro-atomized mist spray. Fog-like spray results with pressures over 150 P.S.I. Spray angles of 70, 80, and 90 degrees are available, with 70 degrees being standard, measured @ 150 P.S.I.

Construction - Type A consists of basic nozzle tip with 9/16"-24 UNF connection and 100 mesh strainer (for capacities of 0.37, 0.50 and 0.75 GPH, a 200 mesh strainer is furnished). Type AM consists of Type A nozzle tip/strainer and 1/8", 1/4" or 3/8" NPT male adapter. Type AF consists of Type A nozzle tip/strainer and 1/8" or 1/4" female adapter.

Materials - Nozzle tip (all types) are furnished in 416 or 303 stainless steel. Type "AM" (Male) and Type "AF" (Female) adapters are furnished in 303 stainless steel or brass.

Type P

Compact Nozzles

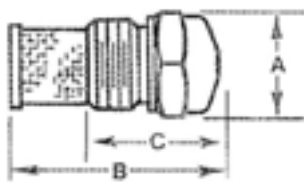


Spray Characteristics - Uniform mist spray pattern with a fine micro-atomized mist spray. Spray angles of 70, 80, and 90 degrees are available, with 70 degrees being standard, measured @ 150 P.S.I.

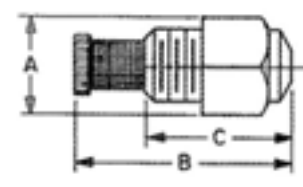
Construction - Type P consists of a compact nozzle body with 1/4" male NPT connection and 100 mesh strainer (for capacities of 0.37, 0.50 and 0.75 GPH, a 200 mesh strainer is furnished).

Materials - Nozzle is furnished in 416 or 303 stainless steel.

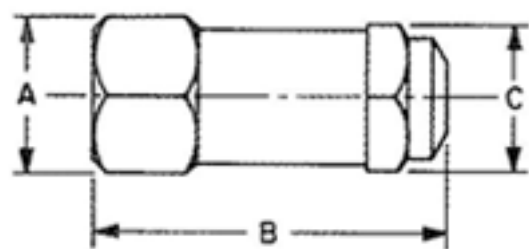
Type A (tip only)



Type P



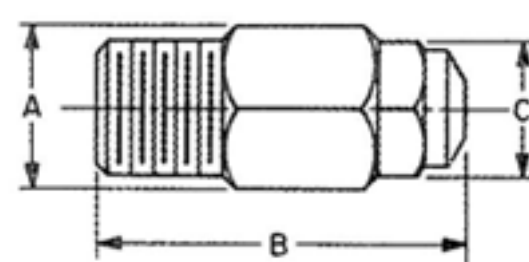
Type AF



Type AF exploded view



Type AM



NOZZLE TYPE	THREAD	SIZE	A	B	C
A	MALE	9/16-24 NEF-2	5/8"	1 9/64"	13/16"
AF	FEMALE	1/8" NPT	3/4"	1 27/32"	5/8"
		1/4" NPT	3/4"	1 27/32"	5/8"
AM	MALE	1/8" NPT	3/4"	1 15/16"	5/8"
		1/4" NPT	3/4"	2 1/8"	5/8"
		3/8" NPT	3/4"	1 57/64"	5/8"
P	MALE	1/4" NPT	5/8"	1 5/16"	7/8"

Ordering Information: Specify

1. Type A (tip & strainer only); Type AM (tip & strainer with a male adapter); Type AF (tip & strainer with female adapter), Type P
2. Capacity in gallons/hour (GPH) – DO NOT CONFUSE WITH GALLONS PER MINUTE!
3. Spray angle - 70°, 80° & 90° (Note: 70° spray angle will be furnished unless otherwise specified)
4. Pipe thread size (eg. 1/8", 1/4" or 3/8")
5. Material – Nozzle: 416 or 303 stainless steel Adapter: 303 stainless steel or brass for the AF or AM nozzles

[Misting Spray Nozzles PDF Catalog - click below](#)

[Mist-Jet® Misting Spray Nozzles PDF](#)

Nozzles Applications:

- greenhouse spray nozzle
- mist cooling
- humidification
- fogging systems
- coatings
- dust suppression
- chemical spraying
- other fine atomization spray applications

The table provides capacity data in gallons per hour (GPH) for different nozzle types (A, AF, AM, P) at various pressures (40, 60, 80, 100, 125, 150, 200, 300, 400, 500 PSI) and spray angles (70°, 80°, 90°). It also lists the nozzle size and the adapter thread size for AF and AM types.



TYPE AF
Female
1/8" & 1/4"



TYPE AM
Male
1/8", 1/4" & 3/8"



TYPE P
Male
1/4"

MIST-JET HOLLOW CONE NOZZLES

TYPES A, AF, AM, P
Spray Angles 70°, 80° & 90°

The table below contains flow rates for all nozzles.

Capacity G.P.H. @ 40 P.S.I.	Catalog No.	Approx. Orifice Diameter	CAPACITY IN GALLONS PER HOUR (At Various Pressures in Pounds Per Square Inch)									
			40	60	80	100	125	150	200	300	400	500
.37	A37*	.009	.37	.45	.55	.60	.70	.75	.85	1.05	1.2	1.35
.50	A50*	.010	.50	.60	.70	.80	.85	.95	1.1	1.4	1.6	1.8
.75	A75*	.012	.75	.89	1.1	1.2	1.4	1.5	1.7	2.1	2.4	2.7
1.00	A100	.014	1.0	1.2	1.4	1.6	1.7	1.9	2.2	2.7	3.1	3.5
1.50	A150	.020	1.5	1.8	2.1	2.4	2.7	2.9	3.4	4.1	4.8	5.3
2.00	A200	.024	2.0	2.5	2.8	3.2	3.5	3.9	4.5	5.5	6.4	7.1
2.50	A250	.028	2.5	3.1	3.5	3.9	4.4	4.8	5.5	6.8	7.8	8.8
3.00	A300	.028	3.0	3.7	4.2	4.7	5.2	5.8	6.7	8.2	9.5	10.6
3.50	A350	.031	3.5	4.3	4.9	5.6	6.2	6.8	7.9	9.6	11.1	12.4
4.00	A400	.036	4.0	4.9	5.6	6.3	7.2	7.8	9.0	11.0	12.7	14.2
4.50	A450	.040	4.5	5.4	6.3	7.1	7.9	8.7	10.1	12.4	14.3	16.0
5.00	A500	.040	5.0	6.1	7.1	7.9	8.8	9.7	11.2	13.7	15.8	17.7
5.50	A550	.040	5.5	6.7	7.7	8.6	9.6	10.6	12.2	14.9	17.3	19.3
6.00	A600	.043	6.0	7.3	8.5	9.4	10.5	11.6	13.4	16.3	18.9	21.1
6.50	A650	.046	6.5	8.0	9.3	10.3	11.3	12.6	14.6	17.8	20.6	23.0
7.00	A700	.046	7.0	8.6	9.9	11.1	12.4	13.6	15.7	19.2	22.2	24.8
7.50	A750	.046	7.5	9.3	10.5	11.9	13.2	14.6	16.9	20.6	23.8	26.6
8.00	A800	.052	8.0	9.8	11.3	12.6	14.2	15.5	17.9	21.9	25.3	28.3
8.50	A850	.052	8.5	10.3	12.0	13.4	15.0	16.5	19.1	23.3	26.9	30.1
9.00	A900	.052	9.0	11.0	12.6	14.1	15.8	17.4	20.3	24.8	28.6	32.0
10.0	A1000	.059	10.0	12.2	14.1	15.8	17.6	19.4	22.4	27.4	31.7	35.5
12.0	A1200	.063	12.0	14.7	17.0	19.0	21.0	23.2	26.8	32.7	37.8	42.3
13.0	A1300	.067	13.0	16.2	18.4	20.6	23.0	25.3	29.2	35.7	41.2	46.1
14.0	A1400	.067	14.0	17.1	19.8	22.2	24.8	27.2	31.4	38.3	44.3	49.6
15.0	A1500	.070	15.0	18.4	21.2	23.7	26.3	29.0	33.8	41.2	47.7	53.3
16.0	A1600	.073	16.0	19.6	22.6	25.3	28.2	31.0	35.8	43.7	50.6	56.6
18.0	A1800	.076	18.0	22.0	25.5	28.5	31.8	34.8	40.3	49.4	57.0	63.6
20.0	A2000	.076	20.0	24.5	28.2	31.6	35.2	38.8	44.8	54.7	63.3	71.0
22.0	A2200	.078	22.0	27.0	31.2	34.8	38.6	42.7	49.2	60.2	69.5	77.8
24.0	A2400	.082	24.0	29.4	34.0	38.0	42.3	46.4	53.6	65.4	75.6	84.6
26.0	A2600	.082	26.0	32.0	36.7	41.1	45.8	50.5	58.4	71.2	82.4	92.2
28.0	A2800	.086	28.0	34.2	39.6	44.4	49.4	54.4	62.8	76.6	88.6	99.2
30.0	A3000	.089	30.0	36.8	42.4	47.4	52.6	58.0	67.2	82.2	95.2	106.6
35.0	A3500	.096	35.0	42.7	49.7	55.3	61.6	67.9	78.5	95.7	110.8	124.2

*Furnished with 200 mesh screen

Mist-Jet® TYPE AF - Exploded View



Adapter (available
in male or female)

Mesh
Strainer

Nozzle
TYPE A