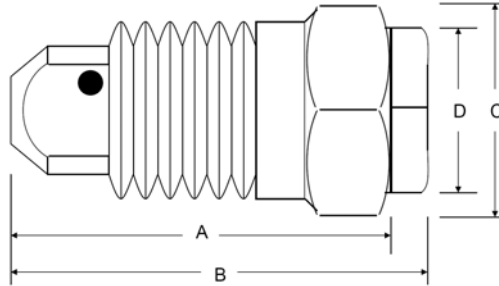


SPRAYLET™ *HOLLOW CONE* NOZZLES TYPE SH (Steinen/Hahn)

SH type Spraylet nozzles produce a uniform hollow cone spray and are generally used in mining and other applications for dust suppression.



DIMENSIONS & WEIGHTS

Nozzle Type	Material	Inlet Conn. (in.)	A (in.)	B (in.)	C (in.)	D (in.)	Weight Approx.(oz.)
All SH nozzles	Brass	3/8"	1 3/32"	1 7/32"	11/16"	1/2"	1

Steinen/Hahn	Spraying Sys	Joy Mining	BODY/TIP ORIFICE		RATED CAPACITY (gallons/minute)				SPRAY ANGLE	
			Decimal	Fraction	10 PSI	20 PSI	40 PSI	100 PSI	20 PSI	80 PSI
	Nozzle Type / Part Number									
SH 2	BD 2		.078/.078	5/64 - 5/64	0.20	0.28	0.40	0.63	60°	70°
SH 3-1	BD 3-1	01566237-0007	.094/.063	3/32 - 1/16	-	0.18	0.26	0.40	49°	65°
SH 3-2	BD 3-2	01566237-0051	.094/.078	3/32 - 5/64	0.22	0.31	0.44	0.69	57°	74°
SH 3	BD 3	01566237-0006	.094/.094	3/32 - 3/32	0.30	0.42	0.60	0.95	64°	77°
SH 3-5	BD 3-5		.094/.125	3/32 - 1/8	0.34	0.48	0.68	1.1	80°	95°
SH 3-8	BD 3-8	01566237-0012	.094/.156	3/32 - 5/32	0.41	0.58	0.82	1.3	80°	95°
SH 5-2	BD 5-2		.109/.078	7/64 - 5/64	-	0.38	0.54	0.85	50°	65°
SH 5-3	BD 5-3		.109/.094	7/64 - 3/32	-	0.52	0.74	1.2	59°	75°
SH 5	BD 5	01566237-0047	.109/.125	7/64 - 1/8	0.50	0.71	1.0	1.6	67°	76°
SH 8	BD 8		.156/.156	5/32 - 5/32	0.80	1.1	1.6	2.5	65°	70°
SH 10	BD 10		.156/.172	5/32 - 11/64	1.0	1.4	2.0	3.2	65°	72°
SH 20-1	n/a		.156/.063	5/32 - 1/16	0.24	0.33	0.47	0.74	15°	25°
SH 20-2	n/a		.156/.078	5/32 - 5/54	0.38	0.54	0.75	1.20	25°	45°
SH 20-3	n/a		.156/.094	5/32 - 3/32	0.62	0.88	1.24	2.00	35°	45°

The Type SH Spraylet™ nozzle is manufactured by HAHN Industries, a Division of Steinen. These nozzles are direct replacements for equivalent Spraying Systems type BD WhirlJet® nozzles.

FOR MORE INFORMATION, EACH OF THE ABOVE NOZZLES HAS AVAILABLE A SPECIFICATION DATA SHEET AVAILABLE AT www.steinen.com/hahn

WhirlJet® is a registered trademark of the Spraying Systems Co.

