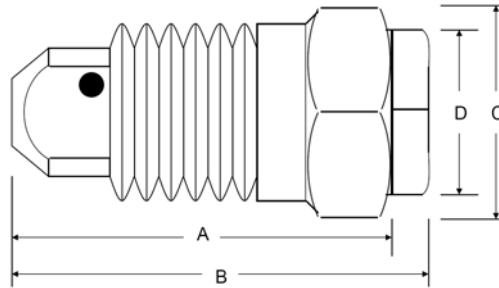


### SPRAYLET™ *HOLLOW CONE* NOZZLES TYPE SH (Steinen/Hahn)

SH type Spraylet nozzles produce a uniform hollow cone spray and are generally used in mining and other applications for dust suppression.

The SH 3 Spraylet nozzle is manufactured by HAHN Industries, a Division of Steinen. These nozzles are direct replacements for equivalent Spraying Systems BD 3 WhirlJet® nozzles.



		DIMENSIONS & WEIGHTS							
Nozzle Type	Material	Inlet			A (in.)	B (in.)	C (in.)	D (in.)	Weight Approx.(oz.)
		Conn. (in.)							
<b>STEINEN/HAHN</b>	<b>SH 3</b>	<b>Brass</b>	<b>3/8"</b>	<b>1 3/32"</b>	<b>1 7/32"</b>	<b>11/16"</b>	<b>1/2"</b>	<b>1</b>	
Spraying Systems	BD 3	Brass	3/8"	1 3/32"	1 1/4"	11/16"	1/2"	1	

Nozzle Type	BODY/TIP ORIFICE	RATED CAPACITY (gallons/minute)					SPRAY ANGLE		
		Decimal	Fraction	10 PSI	20 PSI	40 PSI	100 PSI	20 PSI	80 PSI
<b>STEINEN/HAHN</b>	<b>SH 3</b>	<b>.094/.094</b>	<b>3/32 - 3/32</b>	<b>0.30</b>	<b>0.42</b>	<b>0.60</b>	<b>0.95</b>	<b>64°</b>	<b>77°</b>
Spraying Systems	BD 3	.094/.094	3/32 - 3/32	0.30	0.42	0.60	0.95	64°	77°

Order Steinen part # SH 3. Previously known as Hahn 3-3 or as part #281-00393, #281-00383 or #281-00303. Nozzles stamped 3-3 have older markings, but are otherwise the same as SH 3 nozzles.

#### CALCULATED FLOW RATES (gallons/minute)

45 PSI	50 PSI	55 PSI	60 PSI	65 PSI	70 PSI	75 PSI	80 PSI
<b>0.64</b>	<b>0.67</b>	<b>0.70</b>	<b>0.73</b>	<b>0.76</b>	<b>0.79</b>	<b>0.82</b>	<b>0.85</b>
85 PSI	90 PSI	95 PSI	100 PSI	105 PSI	110 PSI	115 PSI	120 PSI
<b>0.87</b>	<b>0.90</b>	<b>0.92</b>	<b>0.95</b>	<b>0.97</b>	<b>0.99</b>	<b>1.02</b>	<b>1.04</b>

Calculated flow rates accurate to within ±5%

WhirlJet® is a registered trademark of the Spraying Systems Co.

