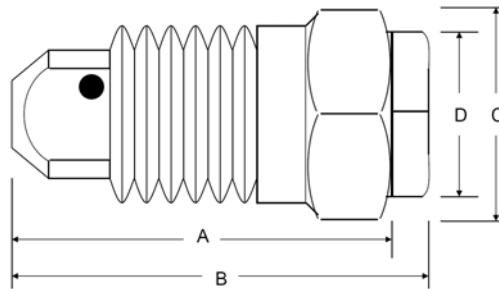


SPRAYLET™ *HOLLOW CONE* NOZZLES

TYPE SH (Steinen/Hahn)

SH type Spraylet nozzles produce a uniform hollow cone spray and are generally used in mining and other applications for dust suppression.

The SH 3-8 Spraylet nozzle is manufactured by HAHN Industries, a Division of Steinen. These nozzles are direct replacements for equivalent Spraying Systems BD 3-8 WhirlJet® nozzles.



		DIMENSIONS & WEIGHTS							
Nozzle Type	Material	Inlet			A (in.)	B (in.)	C (in.)	D (in.)	Weight Approx.(oz.)
		Conn. (in.)							
STEINEN/HAHN	SH 3-8	Brass	3/8"		1 3/32"	1 7/32"	11/16"	1/2"	1
Spraying Systems	BD 3-8	Brass	3/8"		1 3/32"	1 1/4"	11/16"	1/2"	1

Nozzle Type	BODY/TIP ORIFICE	RATED CAPACITY (gallons/minute)				SPRAY ANGLE			
		Decimal	Fraction	10 PSI	20 PSI	40 PSI	100 PSI	20 PSI	80 PSI
STEINEN/HAHN	SH 3-8	.094/.156	3/32 - 5/32	0.41	0.58	0.82	1.30	80°	95°
Spraying Systems	BD 3-8	.094/.156	3/32 - 5/32	0.41	0.58	0.82	1.30	84°	89°*

Order Steinen part # SH 3-8. Previously known as either part #281-00398, #281-00388 or #281-00308. * Spray Angle at 100 PSI

CALCULATED FLOW RATES (gallons/minute)

45 PSI	50 PSI	55 PSI	60 PSI	65 PSI	70 PSI	75 PSI	80 PSI
0.87	0.92	0.96	1.00	1.05	1.08	1.12	1.16
85 PSI	90 PSI	95 PSI	100 PSI	105 PSI	110 PSI	115 PSI	120 PSI
1.20	1.23	1.26	1.30	1.33	1.36	1.39	1.42

Calculated flow rates accurate to within ±5%

WhirlJet® is a registered trademark of the Spraying Systems Co.

