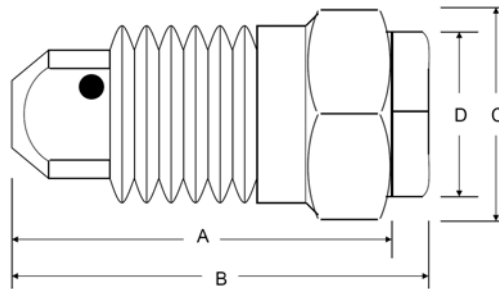


### SPRAYLET™ *HOLLOW CONE* NOZZLES TYPE SH (Steinen/Hahn)

SH type Spraylet nozzles produce a uniform hollow cone spray and are generally used in mining and other applications for dust suppression.

The SH 3-5 Spraylet nozzle is manufactured by HAHN Industries, a Division of Steinen. These nozzles are direct replacements for equivalent Spraying Systems BD 3-5 WhirlJet® nozzles.



DIMENSIONS & WEIGHTS								
	Nozzle Type	Material	Inlet					Weight Approx.(oz.)
			Conn. (in.)	A (in.)	B (in.)	C (in.)	D (in.)	
<b>STEINEN/HAHN</b>	<b>SH 3-5</b>	<b>Brass</b>	<b>3/8"</b>	<b>1 3/32"</b>	<b>1 7/32"</b>	<b>11/16"</b>	<b>1/2"</b>	<b>1</b>
Spraying Systems	BD 3-5	Brass	3/8"	1 3/32"	1 1/4"	11/16"	1/2"	1

	Nozzle Type	BODY/TIP ORIFICE		RATED CAPACITY (gallons/minute)				SPRAY ANGLE	
		Decimal	Fraction	10 PSI	20 PSI	40 PSI	100 PSI	20 PSI	80 PSI
<b>STEINEN/HAHN</b>	<b>SH 3-5</b>	<b>.094/.125</b>	<b>3/32 - 1/8</b>	<b>0.34</b>	<b>0.48</b>	<b>0.68</b>	<b>1.1</b>	<b>80°</b>	<b>95°</b>
Spraying Systems	BD 3-5	.094/.125	3/32 - 1/8	0.34	0.48	0.68	1.1	80°	86°*

Order Steinen part # SH 3-5. Previously known as either part #281-00395, #281-00385 or #281-00305. \* Spray Angle at 100 PSI

#### CALCULATED FLOW RATES (gallons/minute)

45 PSI	50 PSI	55 PSI	60 PSI	65 PSI	70 PSI	75 PSI	80 PSI
<b>0.72</b>	<b>0.76</b>	<b>0.80</b>	<b>0.83</b>	<b>0.87</b>	<b>0.90</b>	<b>0.93</b>	<b>0.96</b>
85 PSI	90 PSI	95 PSI	100 PSI	105 PSI	110 PSI	115 PSI	120 PSI
<b>0.99</b>	<b>1.02</b>	<b>1.05</b>	<b>1.10</b>	<b>1.11</b>	<b>1.13</b>	<b>1.15</b>	<b>1.18</b>

Calculated flow rates accurate to within ±5%

WhirlJet® is a registered trademark of the Spraying Systems Co.

