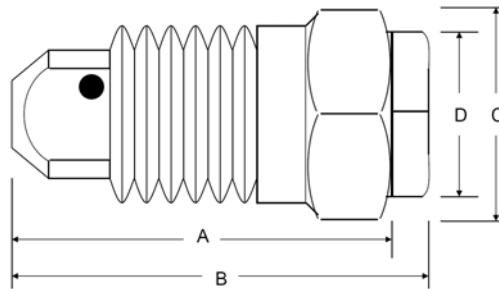


## SPRAYLET™ *HOLLOW CONE* NOZZLES

### TYPE SH (Steinen/Hahn)

SH type Spraylet nozzles produce a uniform hollow cone spray and are generally used in mining and other applications for dust suppression.

The SH 20-1 Spraylet nozzle is manufactured by HAHN Industries, a Division of Steinen.



#### DIMENSIONS & WEIGHTS

Nozzle Type	Material	Inlet		A (in.)	B (in.)	C (in.)	D (in.)	Weight Approx.(oz.)
		Conn. (in.)						
STEINEN/HAHN	SH 20-1	Brass	3/8"	1 3/32"	1 7/32"	11/16"	1/2"	1

Nozzle Type	BODY/TIP ORIFICE		RATED CAPACITY (gallons/minute)				SPRAY ANGLE		
	Decimal	Fraction	10 PSI	20 PSI	40 PSI	100 PSI	20 PSI	80 PSI	
STEINEN/HAHN	SH 20-1	.156/.063	5/32 - 1/16	0.24	0.33	0.47	0.74	15°	25°

Order Steinen part # SH 20-1. Previously known as Hahn 20-1 or as part #281-20901, #281-20801 or #281-20001. Nozzles stamped 20-1 have older markings, but are otherwise the same as SH 20-1 nozzles.

#### CALCULATED FLOW RATES (gallons/minute)

45 PSI	50 PSI	55 PSI	60 PSI	65 PSI	70 PSI	75 PSI	80 PSI
0.50	0.53	0.55	0.58	0.60	0.62	0.64	0.66

85 PSI	90 PSI	95 PSI	100 PSI	105 PSI	110 PSI	115 PSI	120 PSI
0.68	0.70	0.72	0.74	0.76	0.78	0.80	0.82

Calculated flow rates accurate to within ±5%

