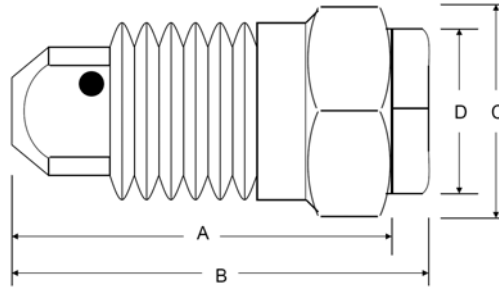


SPRAYLET™ *HOLLOW CONE* NOZZLES TYPE SH (Steinen/Hahn)

SH type Spraylet nozzles produce a uniform hollow cone spray and are generally used in mining and other applications for dust suppression.

The SH 2 Spraylet nozzle is manufactured by HAHN Industries, a Division of Steinen. These nozzles are direct replacements for equivalent Spraying Systems BD 2 WhirlJet® nozzles.



| DIMENSIONS & WEIGHTS | | | | | | | | | |
|----------------------|-------------|----------|-------------|--|---------|---------|---------|---------|---------------------|
| | Nozzle Type | Inlet | | | A (in.) | B (in.) | C (in.) | D (in.) | Weight Approx.(oz.) |
| | | Material | Conn. (in.) | | | | | | |
| STEINEN/HAHN | SH 2 | Brass | 3/8" | | 1 3/32" | 1 7/32" | 11/16" | 1/2" | 1 |
| Spraying Systems | BD 2 | Brass | 3/8" | | 1 3/32" | 1 1/4" | 11/16" | 1/2" | 1 |

| | Nozzle Type | BODY/TIP ORIFICE | | RATED CAPACITY (gallons/minute) | | | | SPRAY ANGLE | |
|------------------|-------------|------------------|-------------|---------------------------------|--------|--------|---------|-------------|--------|
| | | Decimal | Fraction | 10 PSI | 20 PSI | 40 PSI | 100 PSI | 20 PSI | 80 PSI |
| STEINEN/HAHN | SH 2 | .078/.078 | 5/64 - 5/64 | 0.20 | 0.28 | 0.40 | 0.63 | 60° | 70° |
| Spraying Systems | BD 2 | .078/.078 | 5/64 - 5/64 | 0.20 | 0.28 | 0.40 | 0.63 | 60° | 70° |

Order Steinen part # SH 2. Previously known as either part #281-00292, #281-00282 or #281-00202. Nozzles stamped 2-2 have older markings, but are otherwise the same as SH 2 nozzles.

CALCULATED FLOW RATES (gallons/minute)

| | | | | | | | |
|--------|--------|--------|---------|---------|---------|---------|---------|
| 45 PSI | 50 PSI | 55 PSI | 60 PSI | 65 PSI | 70 PSI | 75 PSI | 80 PSI |
| 0.42 | 0.45 | 0.47 | 0.49 | 0.51 | 0.53 | 0.55 | 0.57 |
| 85 PSI | 90 PSI | 95 PSI | 100 PSI | 105 PSI | 110 PSI | 115 PSI | 120 PSI |
| 0.58 | 0.60 | 0.62 | 0.63 | 0.65 | 0.66 | 0.68 | 0.69 |

Calculated flow rates accurate to within ±5%

WhirlJet® is a registered trademark of the Spraying Systems Co.

