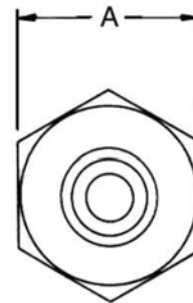
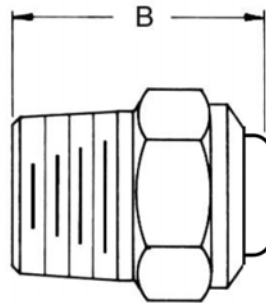


TYPE "L" *FULL CONE* NOZZLE

TYPE "L" (Steinen/Hahn)

Type "L" full cone nozzles produce a uniform cone spray and are generally used in mining and other applications for dust suppression. Type L full cone nozzles are very similar to Steinen's full line of Solid-Jet® nozzles, except Type L nozzles have unique flow rates and spray angles as specified by some mining equipment manufacturers.

Type L nozzles are brass and available in 1/4" NPT (141-xxxxx) or 3/8" NPT (241-xxxxx).



DIMENSIONS & WEIGHTS

	Material	Inlet Conn. (in.)	A (in.)	B (in.)	Weight Approx.(oz.)
Type L (141-xxxxx)	Brass	1/4"	5/8"	15/16"	3/4
Type L (241-xxxxx)	Brass	3/8"	3/4"	31/32"	1 1/2

RATED CAPACITY (gallons/minute)

Type (Part Number):	40 PSI	60 PSI	80 PSI	100 PSI	Spray Angle (approx.)
Type L #1 (141-03152)	0.20	0.24	0.28	0.32	40°
Type L #6.5 (141-09452)	1.30	1.60	1.84	2.06	65°
Type L #10 (141-10952)	1.90	2.33	2.69	3.00	75°
New! Type L #7 (241-13550)	1.35	1.65	1.91	2.13	50°
Type L #9.5 (241-10944)	1.80	2.20	2.55	2.85	60°

HAHN

